

LIFTMOORE 60100 CRANE

60,000 FT.-LB. MOMENT RATING
10,000 LB. MAXIMUM CAPACITY

Liftmoore's 60100 is the second largest capacity crane we have produced. Moment rating of the crane is 60,000 ft.-lbs. with a maximum lifting capacity of 10,000 lbs. at a 6 ft load radius. The 60100 is an ideal crane for those needing a large crane yet not requiring the extra capacity of its big brother in the 72,000 ft-lb class of crane.

360 degrees unlimited rotation is standard on the 60100. Rotation is powered through a 45:1 ratio worm gearbox with a bronze worm gear for positive locking and smoothest operation. The crane rotates on a gear bearing slewing ring with external teeth for best strength.

Wireless FM Radio Proportional control is standard, complete with "tethered Can Wire "

- **60100XP-24** Full Power extension from 11 Ft to 24 Ft
- **60100XP-30** Full Power extension from 15 Ft to 30 Ft

The 60100 meets the manufacturing requirements of OSHA standard 29 CFR 1910.180 including the required strain gage analysis.

Power Extension

Anti Two-Block

7/16" GAC

Traveling Block w/ Swivel hook

Planetary Gear Winch

Hydraulic Boom Elevation


Model
60100XP-24

Proportional Controls

Wireless Radio Controls Standard

360° Unlimited Rotation,
External Gear Bearing

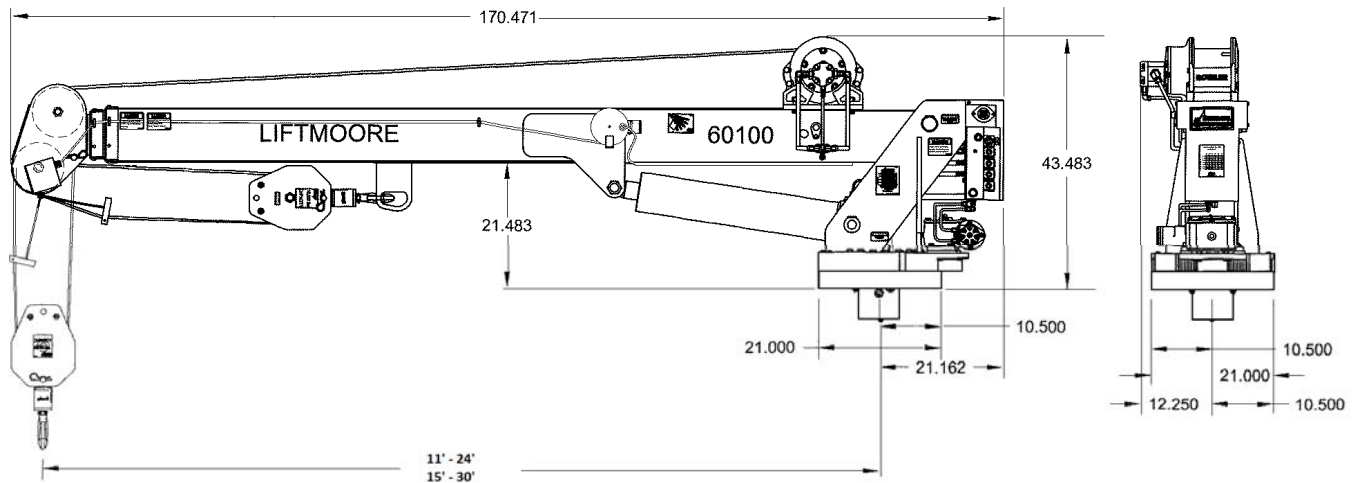
		LOAD CAPACITY - LBS. 60,000 FT-LBS					
		0°	15°	30°	45°	60°	75°
BOOM LENGTH - FT.	12	5000	5716	5774	7071	10000	10000
	14	4286	4437	4949	6061	8571	10000
	16	3750	3882	4330	5303	7500	10000
	18	3333	3451	3849	4714	6667	10000
	20	3000	3106	3464	4243	6000	10000
	22	2727	2823	3149	3857	5455	10000
24	2500	2588	2887	3536	5000	9659	


 713-688-5533
 WWW.LIFTMOORE.COM P/N 24067



HOUSTON, TEXAS
 FAX: (800) 824-5559 (USA & Canada)
 FAX: (713) 688-6324
 PHONE: (713) 688-5533
 www.liftmoore.com

60100 SPECIFICATIONS



MOMENT RATING:

60,000 Ft.-Lbs.

HOIST WINCH:

A planetary gear drive hoist is included. This is the most efficient method of hoisting the load. Single line no load speed of the winch is 35 feet per minute with a 6 GPM flow rate. Winch drum to wire line ratio meets ANSI B30.5 requirements.

10,000 Lbs. @ 6 ft.**	3,750 Lbs. @ 16 ft.
7,500 Lbs. @ 8 ft.**	3,333 Lbs. @ 18 ft.
6,000 Lbs. @ 10 ft.**	3,000 Lbs. @ 20 ft.
5,000 Lbs. @ 12 ft.	2,500 Lbs. @ 24 ft.

** Two part line required for loads above 5000Lbs.

WIRE ROPE and SHEAVES:

The crane is supplied with 100 Ft. of 7/16 in. galvanized aircraft cable. Minimum breaking strength of the rope is 17,600 lbs. The wire rope is outside of the boom and visible for operators continual inspection. A 5-ton travel block for easy two-part hookup is included. The hook includes a easy turning roller thrust bearing. All sheaves meet ANSI requirements.

BOOM:

The boom angle varies from -5 to +75 Degrees. Both the elevation and extension cylinders include an integrally mounted counterbalance valve for positive load holding. The boom extends on Nylatron slide pads for minimum friction.

60100XP-24: Power extension from 11 ft to 24 ft with a two stage Hydraulic cylinder.

60100XP-30: Power extension from 15 ft. to 30 ft. with a two stage Hydraulic cylinder.

ROTATION:

A ball bearing slewing ring is used for crane rotation. The ring has an external gear for greatest possible strength. The rotation gearbox is powered by a low speed, high torque hydraulic motor, which drives the 13,000 In-Lb rated bronze worm gear box providing a smooth, safe rotation mechanism. The gearbox uses roller bearings on all shafts for the longest possible trouble free life. The crane rotation is unlimited.

RADIO REMOTE CONTROL:

FM radio remote control is standard equipment on the 60100. This digital flow control includes the proportional controller for hydraulic flow and monitors the load sensor and anti two-block systems. It includes a system to reduce boom "bounce" during boom down operation. No mechanical relays are used with this control system. A battery charger is included.

HYDRAULIC SYSTEM:

Proportional hydraulic control is standard on the 60100. The system provides variable speed control of all crane functions with the remote control. For smooth operation and minimum heat buildup a pressure compensated flow control system is used. A series control circuit is used so that more than one function will operate simultaneously until maximum pressure is reached.

POWER SOURCE:

The crane requires both Hydraulic and 12 VDC electric power. Hydraulic flow and pressure requirements are 8 GPM and 2750 PSI. An on-off switch, fuse and 25 ft of 10 gauge wire are supplied for standard truck installation.

ENGINE CONTROLS (OPTIONAL):

Engine start, stop and speed control can be included with the remote control. A separate receiver is used in conjunction with the FM controls so that unrestricted rotation is maintained. Truck must be equipped for remote operation

LOAD SENSOR

A load-limiting sensor is installed in the elevation cylinder. This sensor will shut down hoist up, boom out & boom down when an overload is detected. The sensor will reset after the load is lowered.

ANTI TWO-BLOCK:

The anti two-block is standard on this crane and prevents extending the boom against the travel block with possible breakage of the cable

MOUNTING: A minimum 26,000 Lb. GVWR recommended.

Four 1-1/4" Grade 8 bolts are required. Bolts are not furnished. The crane mounts on a 21" square base plate with a 15.5 in. X 18.5 in. bolt pattern.

ACCESSORIES:

An outrigger is needed for stability requirements of OSHA 1910.180. A Boom rest is also required. Liftmoore offers both as options.



HOUSTON, TEXAS
FAX: (800) 824-5559 (USA & Canada)
FAX: (713) 688-6324
PHONE: (713) 688-5533
www.liftmoore.com